

COMUNE DI FANO
LOCALITA' MADONNA PONTE
AREA EX ZUCCHERIFICIO

VARIANTE PARZIALE AL P.R.G. COMUNALE
REDATTA AI SENSI DELLA
L.R. 34/92, ART. 15, COMMA 4

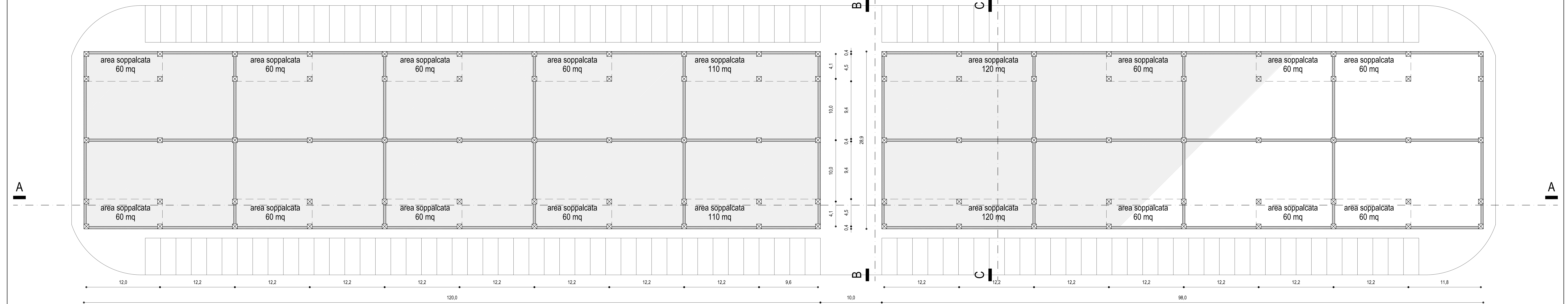
PROPONENTE
MADONNA PONTE S.R.L.

PROGETTO
VIVARIUM S.R.L.

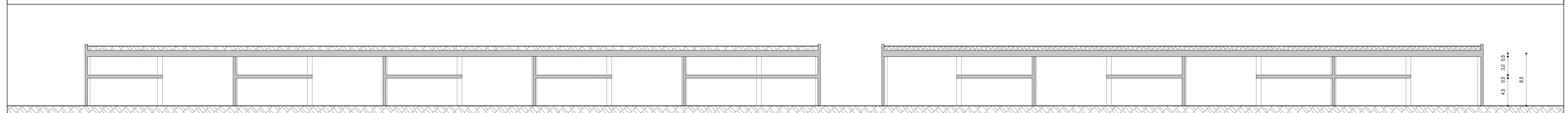
OGGETTO
TIPOLOGIE EDILIZIE
CENTRO PRODUTTIVO

SCALA 1:200
TAV N° 16

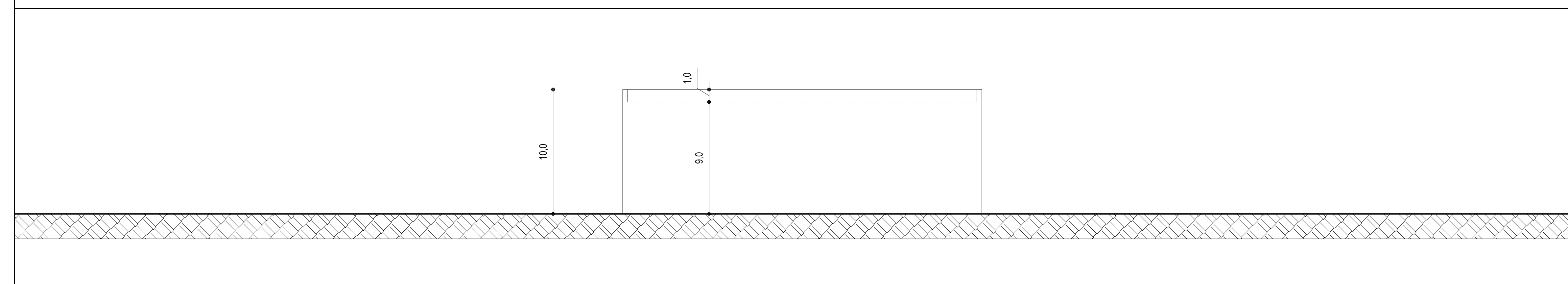
PIANO TERRA - scala 1:200



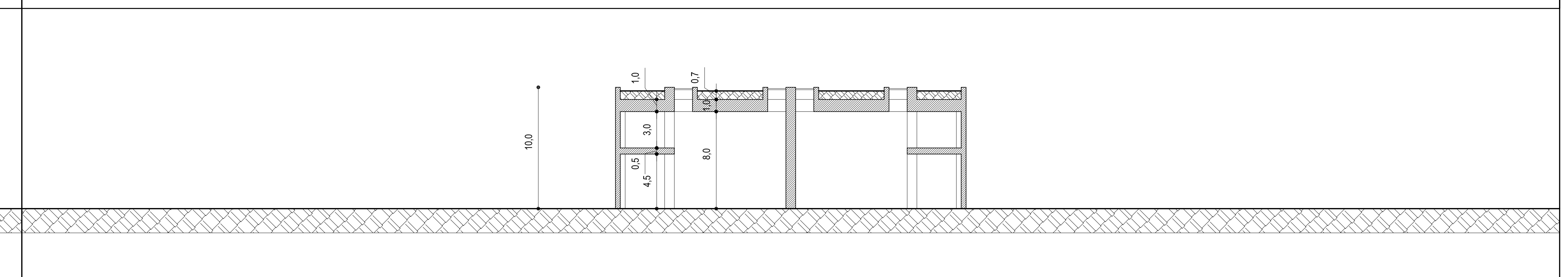
SEZIONE A-A - scala 1:200



SEZIONE B-B - scala 1:200

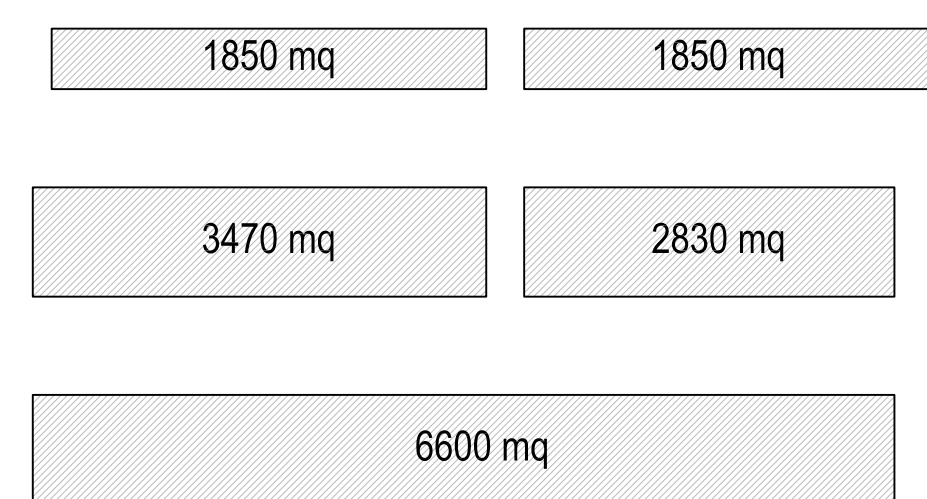


SEZIONE C-C - scala 1:200

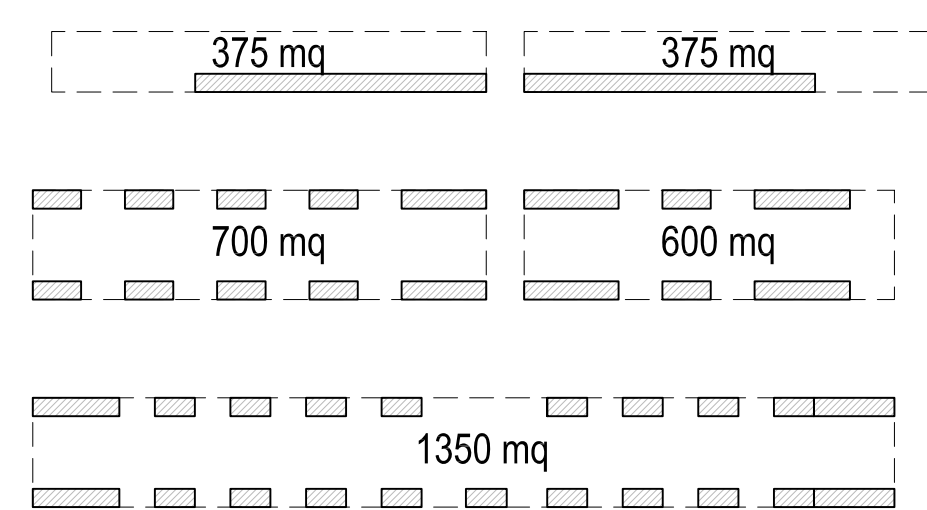


SUPERFICI

PIANO TERRA
16.600 mq



PIANO SOPPALCHI
3.400 mq



(riferimento Tav. 12)