

COMUNE DI FANO
LOCALITA' MADONNA PONTE
AREA EX ZUCCHERIFICIO

VARIANTE PARZIALE AL P.R.G. COMUNALE
REDATTA AI SENSI DELLA
L.R. 34/92, ART. 15, COMMA 4

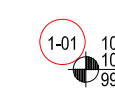






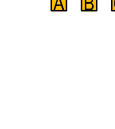


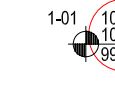
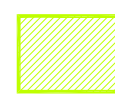

PROPONENTE
MADONNA PONTE S.R.L.

PROGETTO
VIVARIUM S.R.L.

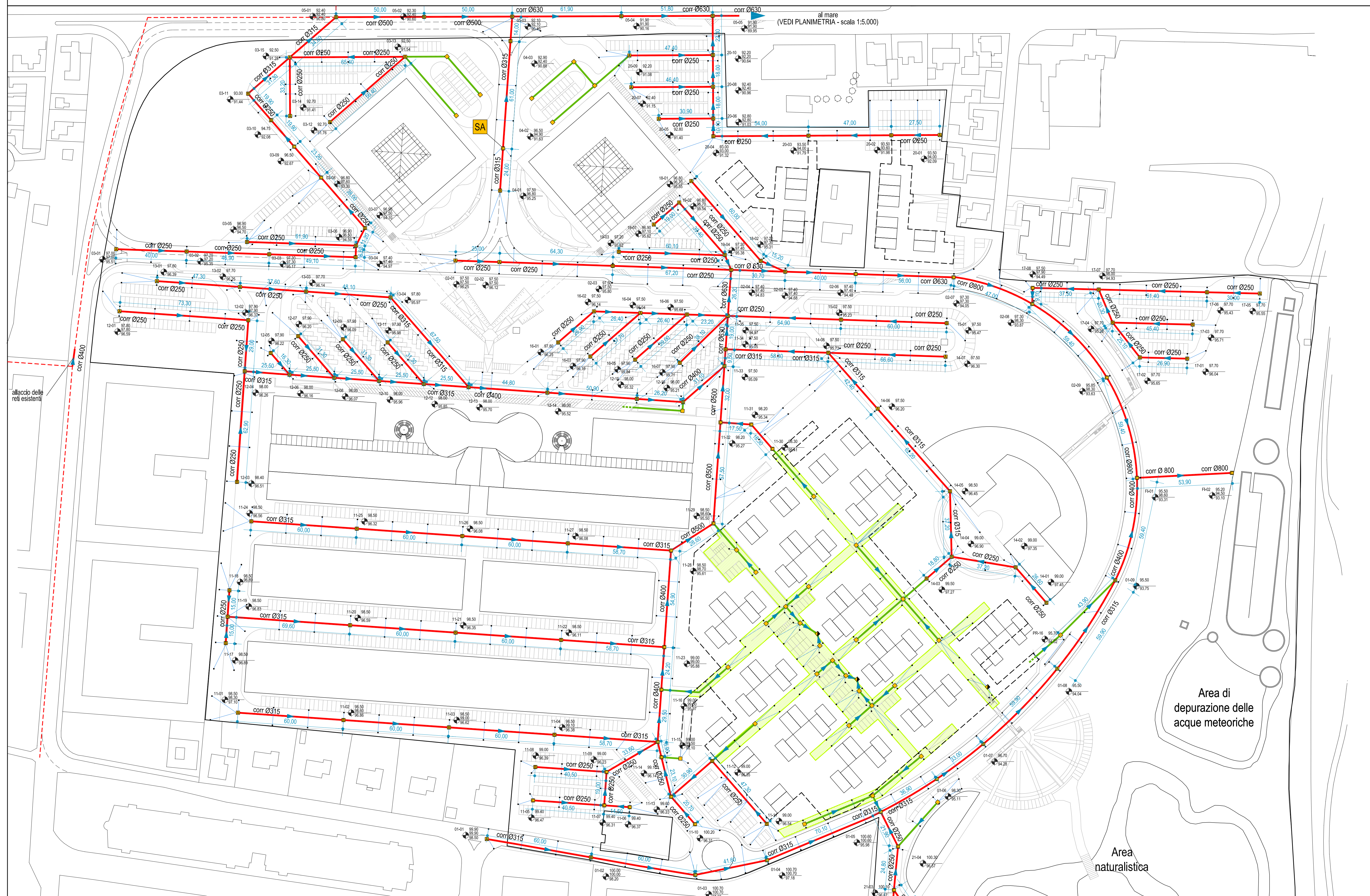
OGGETTO
RETI TECNOLOGICHE
FOGNATURA ACQUE BIANCHE - PLANIMETRIA

SCALA 1:1.000
TAV N° R 01 / A

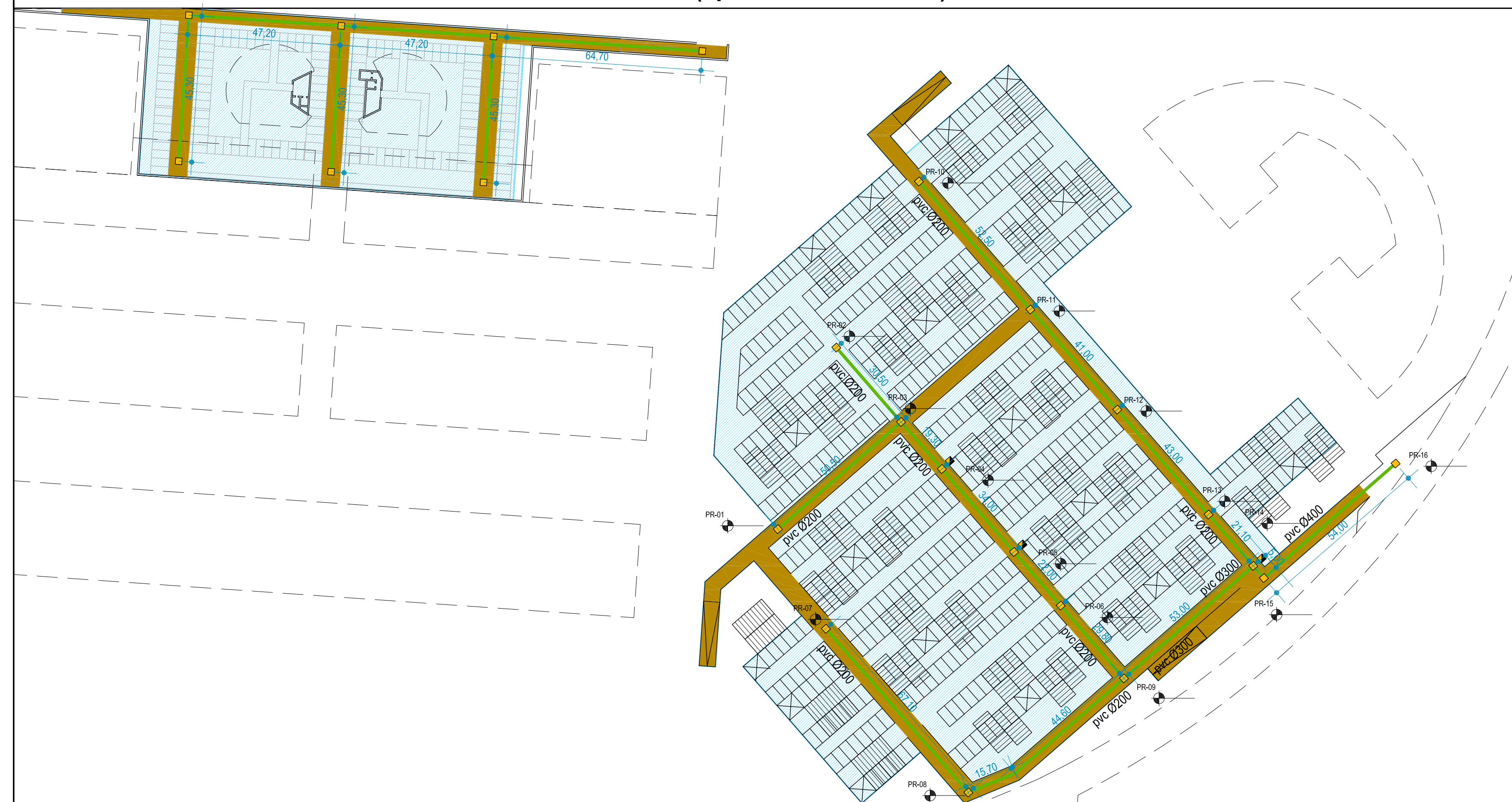
LEGENDA

-  identificazione pozzetto
-  tubazione di progetto di collegamento caditoie pvc Ø200
-  tubazione di progetto su suolo pubblico
-  tubazione di progetto su suolo privato
-  tubazione esistente
- corr Ø250** materiale e diametro tubazione
CORR tubazione in corrugato
-  verso
-  caditoia
-  pozzetto di raccordo A 100x100 (hscavo<1.5m)
B 150x150 (1.5<hscavo<2.8)
C 200x200 (hscavo>2.8
o Ø > 800mm)
-  pozzetto privato ("pluviale")
-  pozzetto di salto
-  quote TERRENO PROGETTO
TERRENO ATTUALE
FONDO TUBAZIONE
-  area privata ad uso pubblico (strade carrabili e percorsi pedonali)
-  area privata

RETE ACQUE BIANCHE - scala 1:1.000



PIANO INTERRATO (quota 95.50 m) - scala 1:1.000



PLANIMETRIA - scala 1:5.000

