

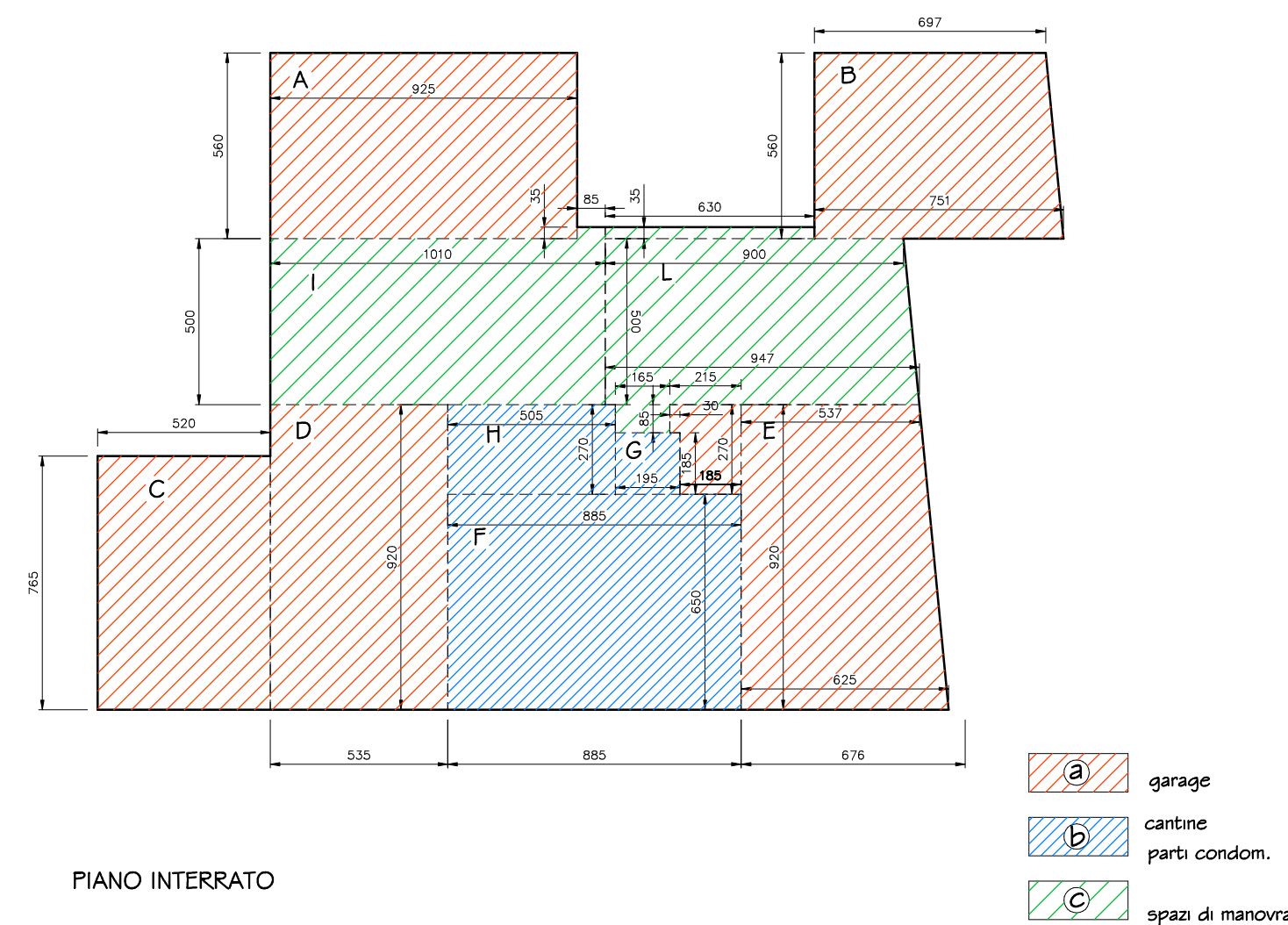
# COMUNE DI FANO

COMPARTO DI COMPLETAMENTO VIA MODIGLIANI ST I\_P09  
PIANO URBANISTICO ATTUATIVO

PROPRIETA': GILI IVANA  
ADANTI PAOLO  
ADANTI ROBERTO  
ADANTI MARIA LETIZIA

PROGETTISTA: ARCH. ROBERTI GIORGIO

CALCOLO SUL E VOLUME



## PIANO INTERRATO

### GARAGE

a	A	mq 9,25	x 5,60	= mq 51,80	x h 3,15	= mq 163,17
	B	mq $\frac{6,97+7,51}{2}$	x 5,60	= mq 40,54	x h 2,75	= mq 111,48
	C	mq 5,20	x 7,65	= mq 39,78	x h 2,75	= mq 109,39
	D	mq 5,35	x 9,20	= mq 49,22	x h 3,15	= mq 155,04
	E	mq $\frac{5,37+6,25}{2} \times 9,20 + 2,15 \times 2,70 - 1,85 \times 0,30$		= mq 58,70	x h 2,75	= mq 161,42

TOT SUL MQ. 243,86 VOLUME MC. 700,05

### CANTINE PARTI COND.

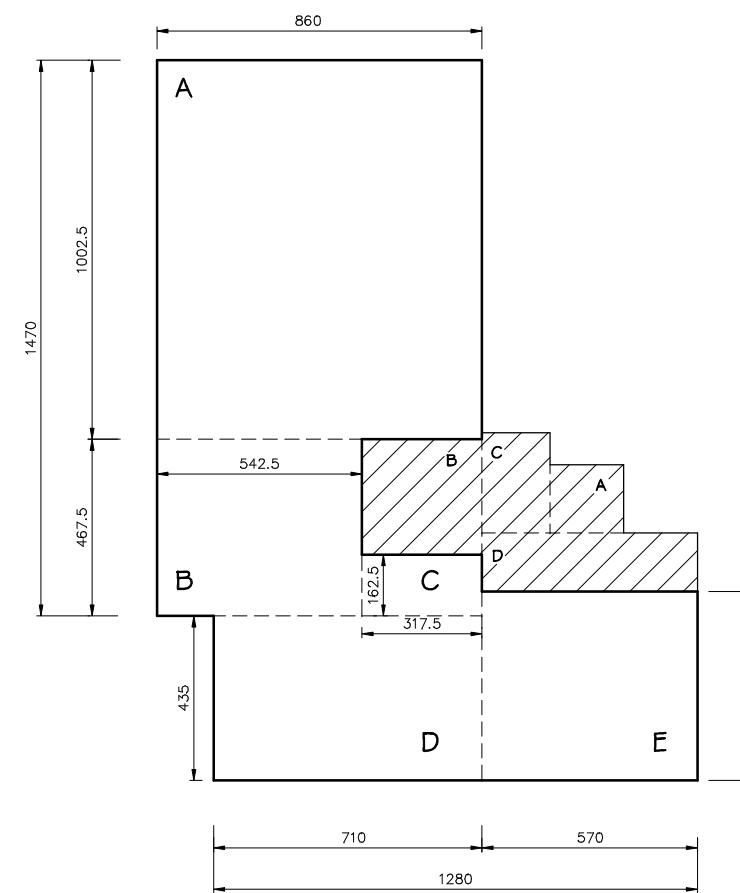
b	F	mq 8,85	x 6,50	= mq 57,52	x h 3,15	= mq 181,20
	G	mq 1,95	x 1,85	= mq 3,60	x h 3,15	= mq 11,34
	H	mq 5,05	x 2,70	= mq 13,63	x h 3,15	= mq 42,93

TOT SUL MQ. 74,75 VOLUME MC. 235,47

### SPAZI DI MANOVRA

c	I	mq $5,00 \times 10,10 + 0,35 \times 0,85$		= mq 50,80	x h 3,15	= mq 160,02
	L	mq $\frac{9,00+9,47}{2} \times 5,00 + 1,65 \times 0,85 + 6,30 \times 0,35$		= mq 49,77	x h 2,75	= mq 136,86

TOT SUL MQ. 103,92 MC 296,88



## PIANO TERRA

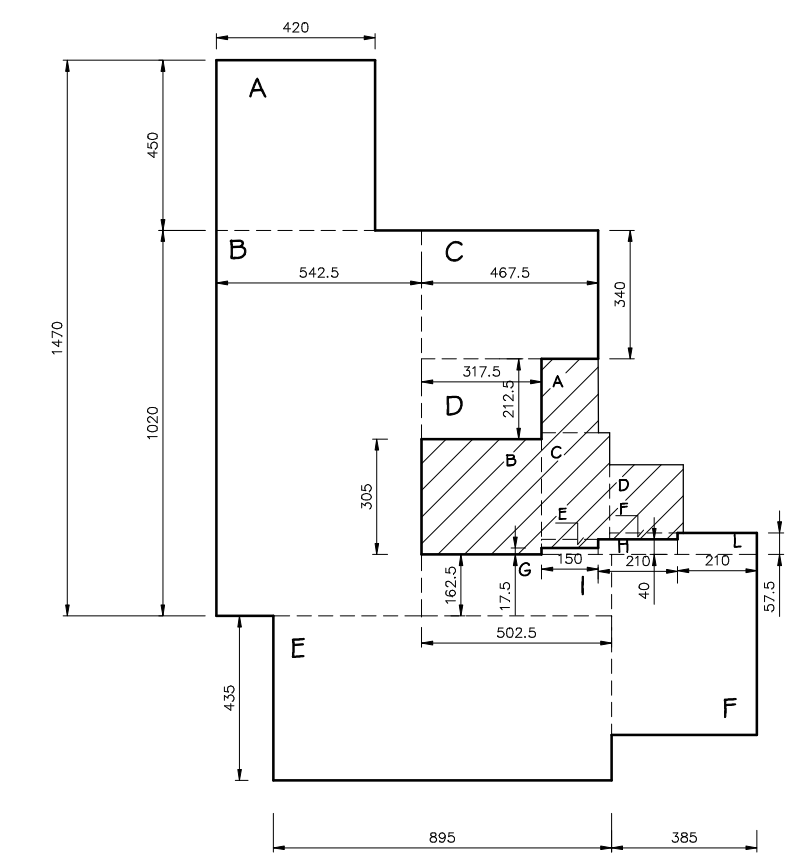
A	mq 8,60	x 10,025	= mq 86,21
B	mq 4,675	x 5,425	= mq 25,36
C	mq 1,625	x 3,175	= mq 5,16
D	mq 7,10	x 4,35	= mq 30,88
E	mq 5,70	x 5,00	= mq 28,50

SUL MQ. 176,11

a	mq 1,80	x 1,95	= mq 3,51
b	mq 3,05	x 3,175	= mq 9,68
c	mq 1,80	x 2,65	= mq 4,77
d	mq 5,70	x 1,55	= mq 8,83

SUL CONDOMINIALE MQ. 26,79

TOT CUBATURA SUL MQ 176,11+ SUL COND. 26,79=MQ 202,90 x H4,15 = MC 842,03



## PIANO PRIMO

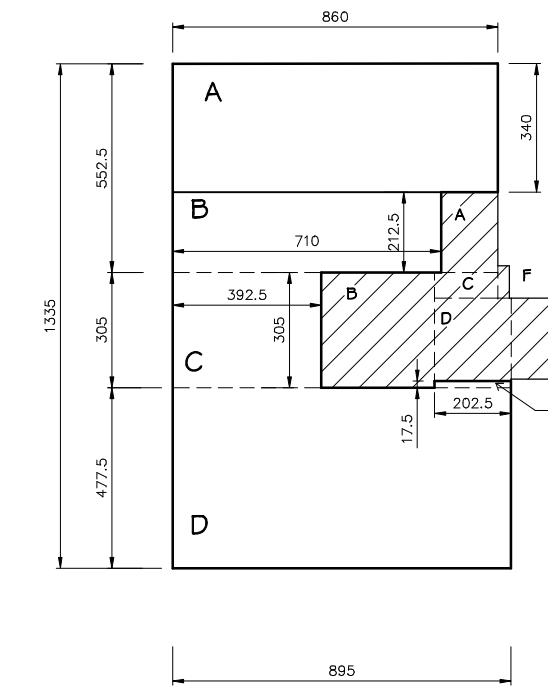
A	mq 4,50	x 4,20	= mq 18,90
B	mq 5,425	x 10,20	= mq 55,33
C	mq 4,675	x 3,40	= mq 15,90
D	mq 2,125	x 3,175	= mq 6,75
E	mq 4,35	x 8,95	= mq 38,93
F	mq 4,775	x 3,85	= mq 18,38
G	mq 1,50	x 0,175	= mq 0,26
H	mq 2,10	x 0,40	= mq 0,84
I	mq 5,025	x 1,625	= mq 8,16
L	mq 2,10	x 0,575	= mq 1,21

SUL MQ. 164,66

a	mq 1,95	x 1,50	= mq 2,92
b	mq 3,05	x 3,175	= mq 9,68
c	mq 1,80	x 2,825	= mq 5,08
d	mq 1,80	x 1,95	= mq 3,51
e	mq 1,50	x 0,225	= mq 0,34
f	mq 1,80	x 0,175	= mq 0,31

SUL CONDOMINIALE MQ. 21,84

TOT CUBATURA SUL MQ. 164,66 +SUL COND 21,84 = MQ. 186,50 x H4,15 = MC. 773,98



## PIANO ATTICO

A	mq 8,60	x 3,40	= mq 29,24
B	mq 7,10	x 2,125	= mq 15,09
C	mq 3,05	x 3,925	= mq 11,97
D	mq 4,775	x 8,95	= mq 42,74
E	mq 2,025	x 0,175	= mq 0,35

SUL MQ. 99,39

a	mq 1,50	x 2,125	= mq 3,19
b	mq 3,05	x 3,00	= mq 9,15
c	mq 1,675	x 0,675	= mq 1,13
d	mq 2,20	x 2,025	= mq 4,45
e	mq 1,90	x 2,15	= mq 4,08
f	mq 0,85	x 0,30	= mq 0,25

SUL CONDOMINIALE MQ. 22,25

TOT CUBATURA SUL MQ. 99,39+SUL COND 22,25 =MQ.121,64X H3,00 = MC. 364,92

VOLUME FUORI TERRA MC 842,03 + MC 773,98 +MC 364,92 = TOTALE MC. 1980,93