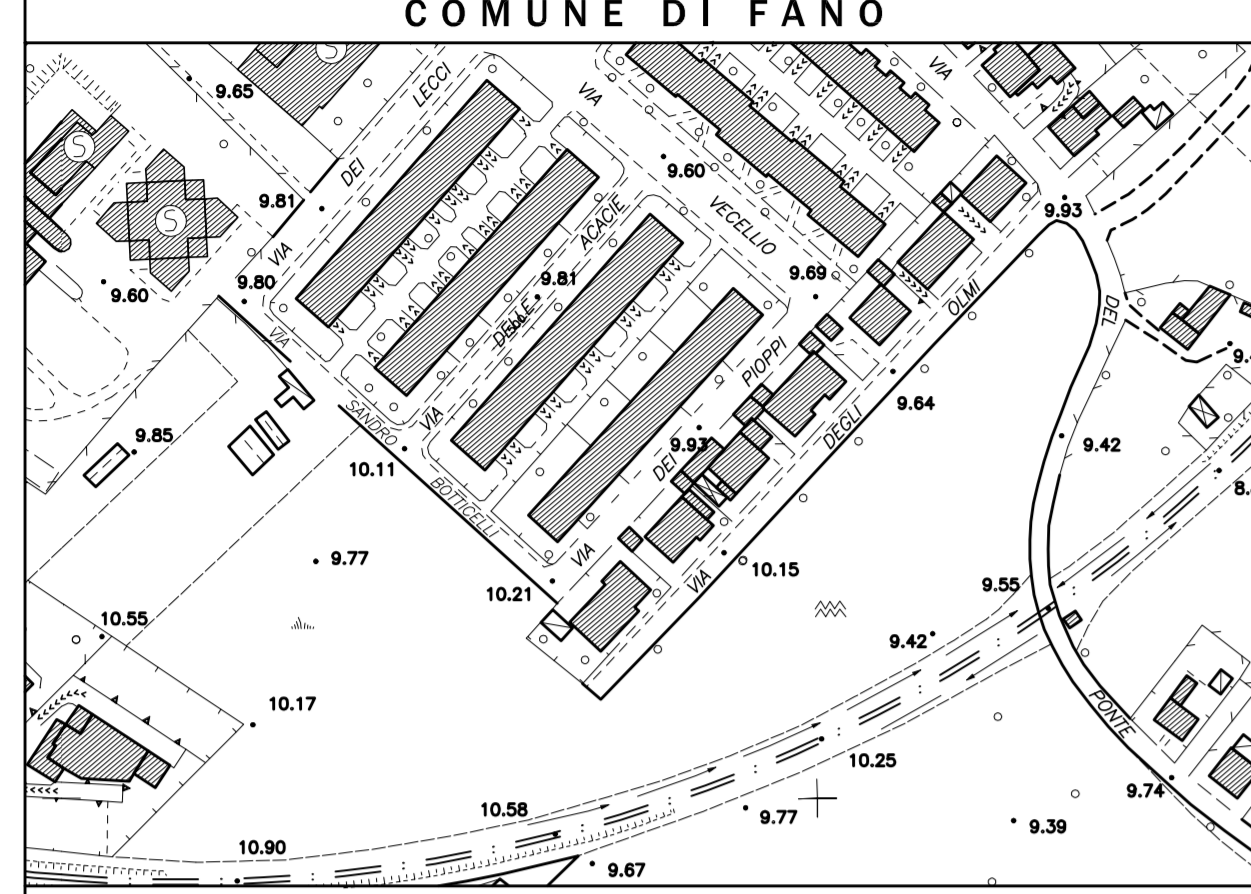


STUDIO CECCHETELLI

PIAZZA XX SETTEMBRE, 35 - 61032 FANO - tel. 0721827780

STRALCIO AEROFOTOGRAMMETRICO SCALA 1:2000



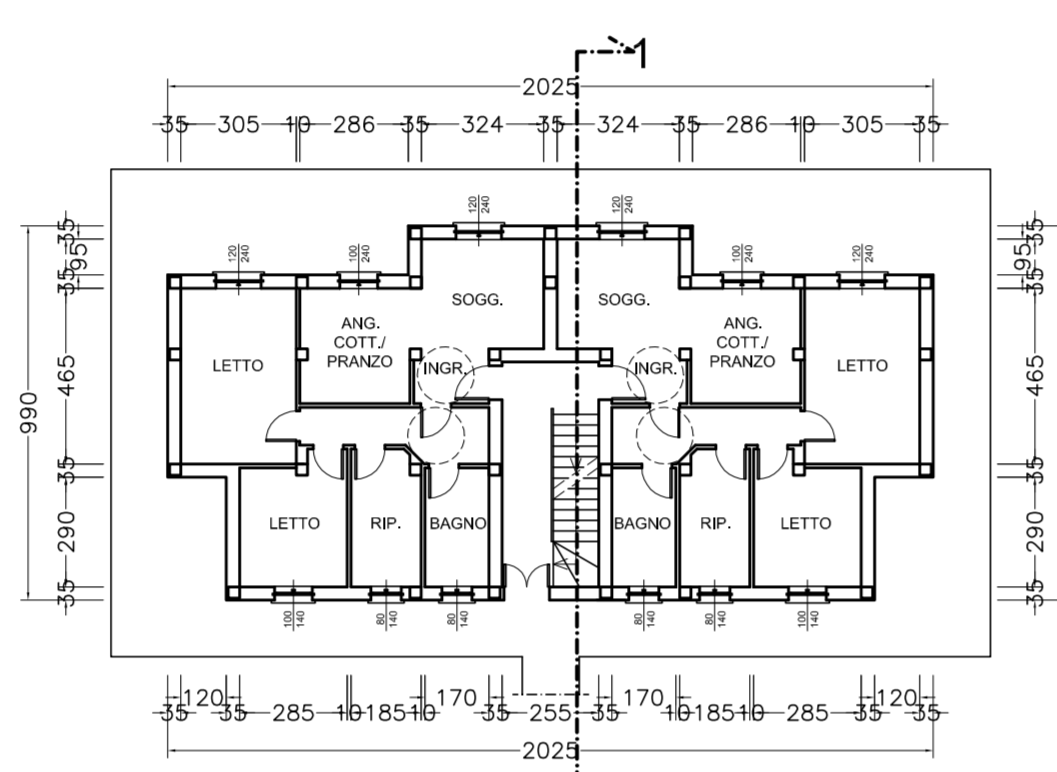
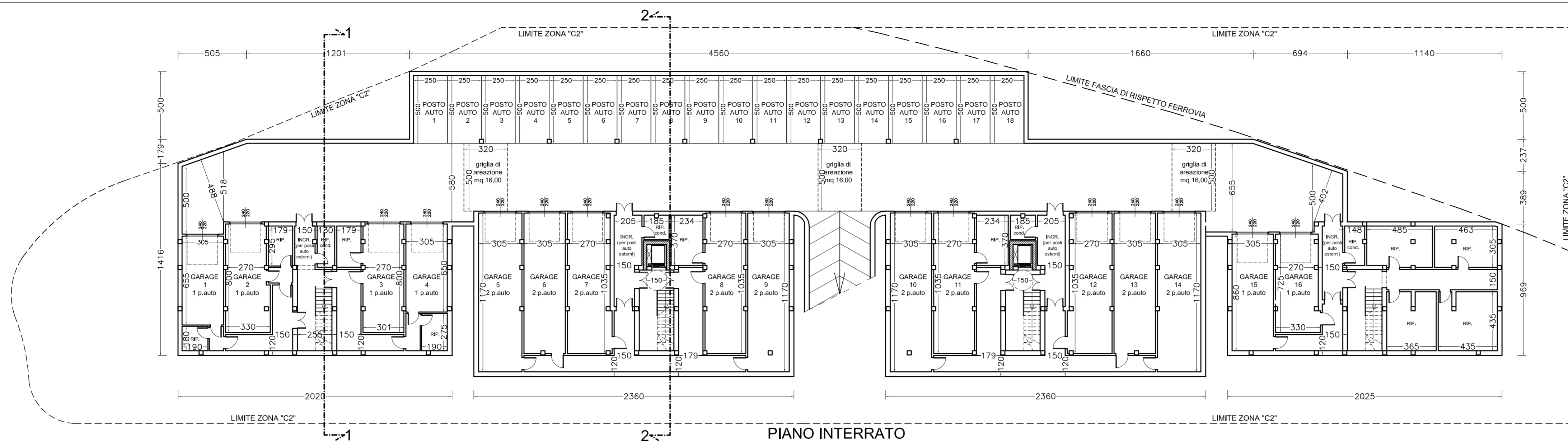
VARIANTE PARZIALE AL P.R.G. VIGENTE REDATTA AI SENSI DELLA L.R. n. 34/92 art. 15 comma 4, RELATIVAMENTE AD UN'AREA SITA IN VIA DEGLI OLMI.

DITTA: BOIANI IOLANDA - CONTARINI MASSIMO - CONTARINI MICHELE - SIMONCINI LUCIA - SERVADIO ANGELA - SERVADIO CARLA - SERVADIO DOMENICO - SERVADIO ELISABETTA - GASPARONI LUIGI

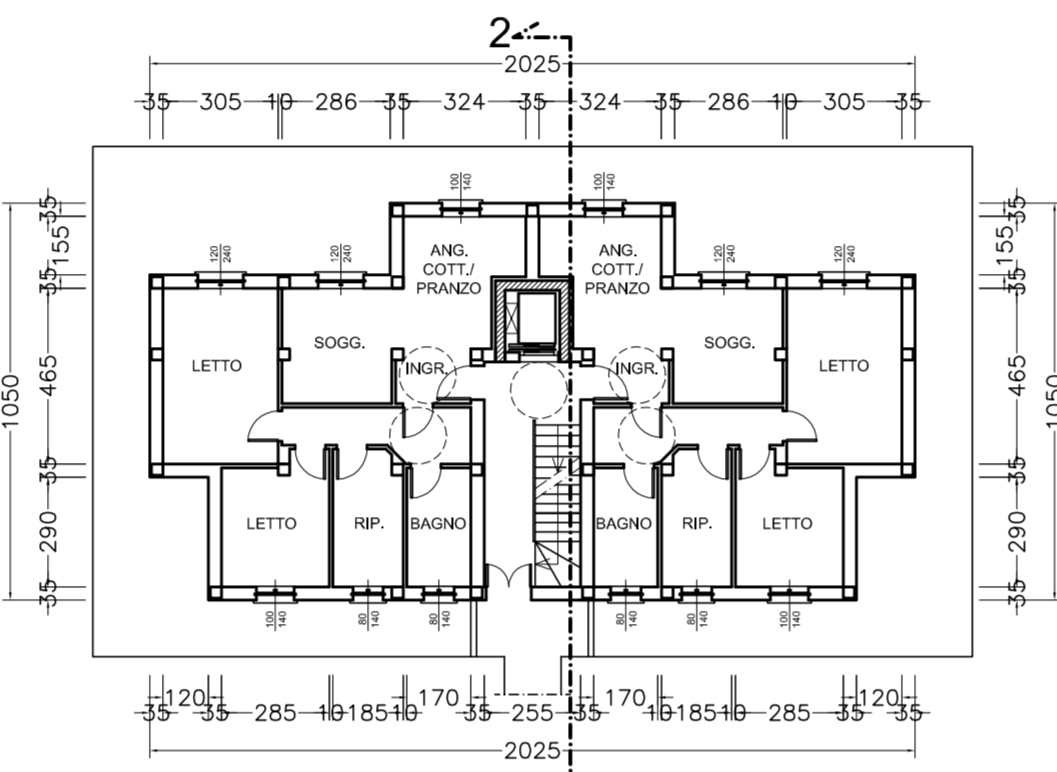
ELABORATO:	TAVOLA:	REVISIONE:
PIANTE - PROSPETTI - SEZIONI DELLA TIPOLOGIA EDILIZIA	A/3.2 Stato di progetto	02
SCALA:	DATA EMISSIONE:	DATA REVISIONE:
1:200	giugno 2009	22/05/2012

DITTA PROPRIETARIA:	
	firma
BOIANI IOLANDA	
CONTARINI MASSIMO	
CONTARINI MICHELE	
SIMONCINI LUCIA	
SERVADIO ANGELA	
SERVADIO CARLA	
SERVADIO DOMENICO	
SERVADIO ELISABETTA	
GASPARONI LUIGI	

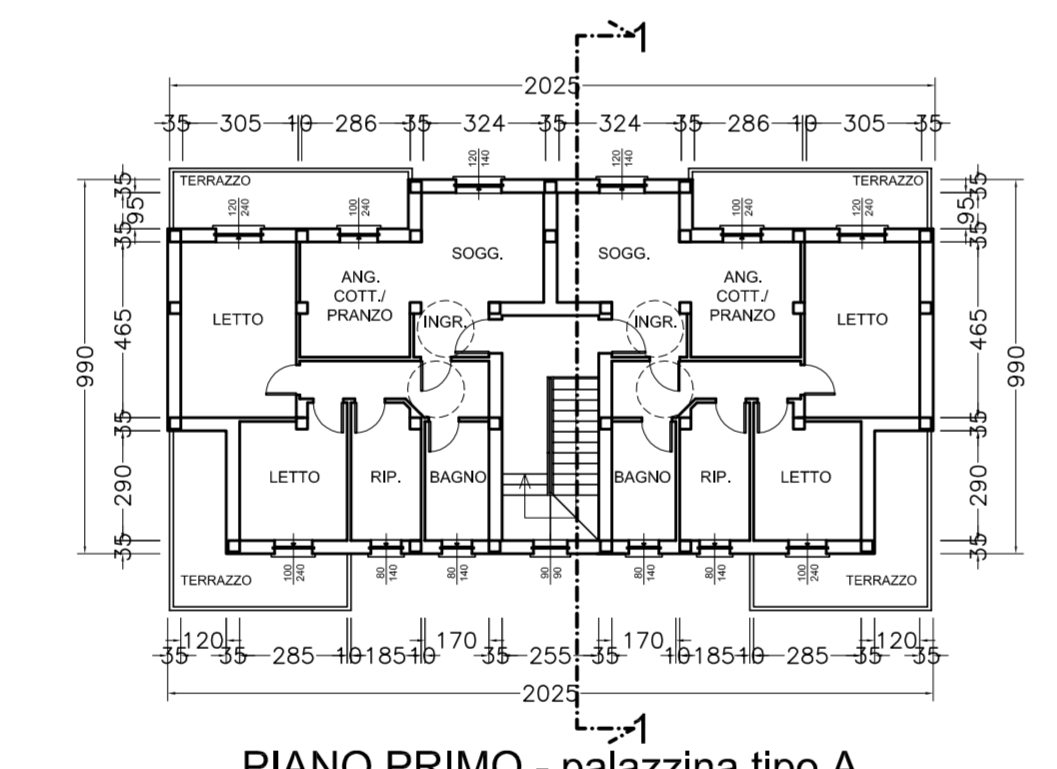
TIPOLOGIA EDILIZIA



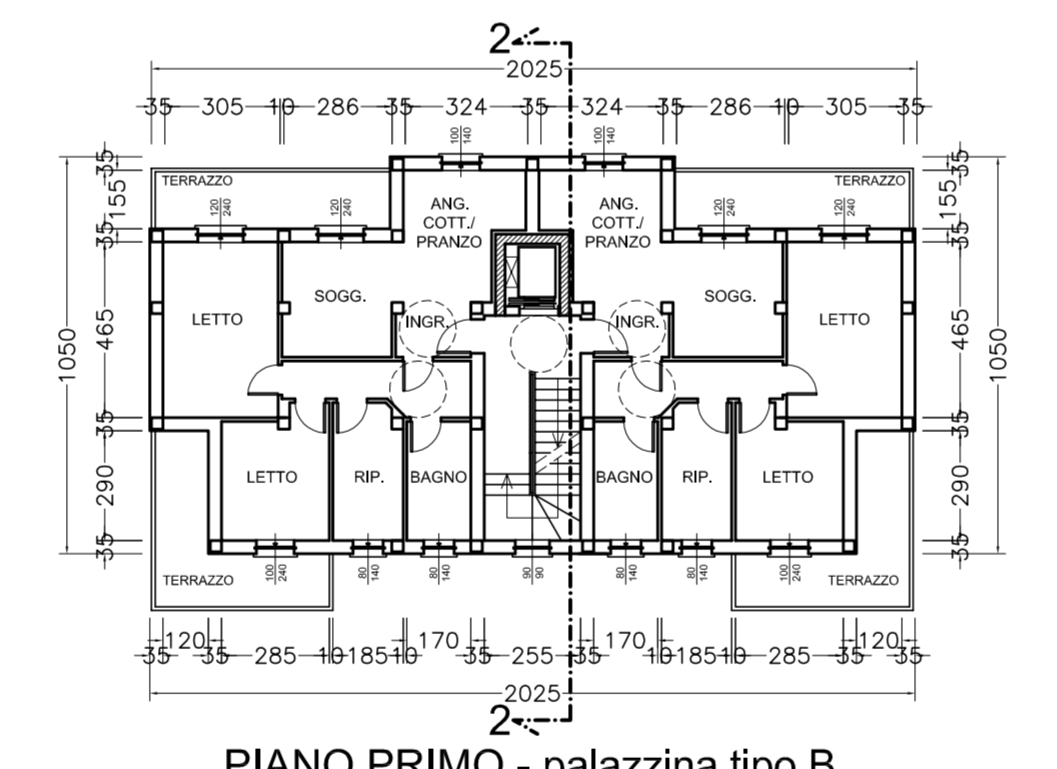
PIANO TERRA - palazzina tipo A



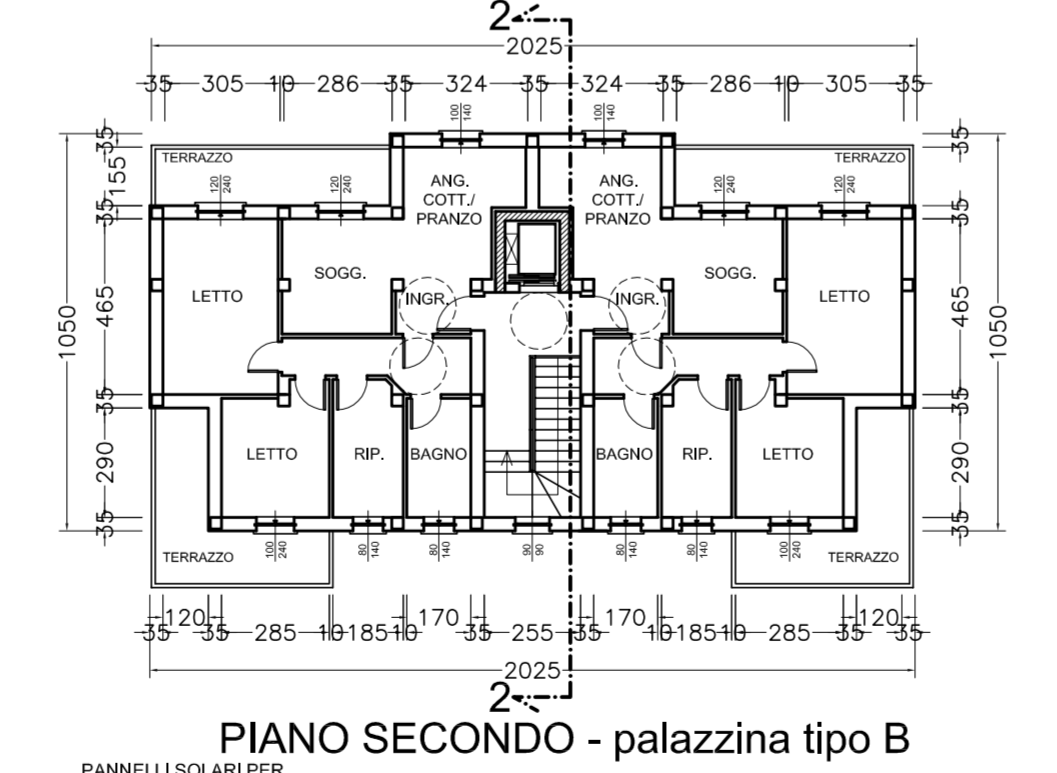
PIANO TERRA - palazzina tipo B



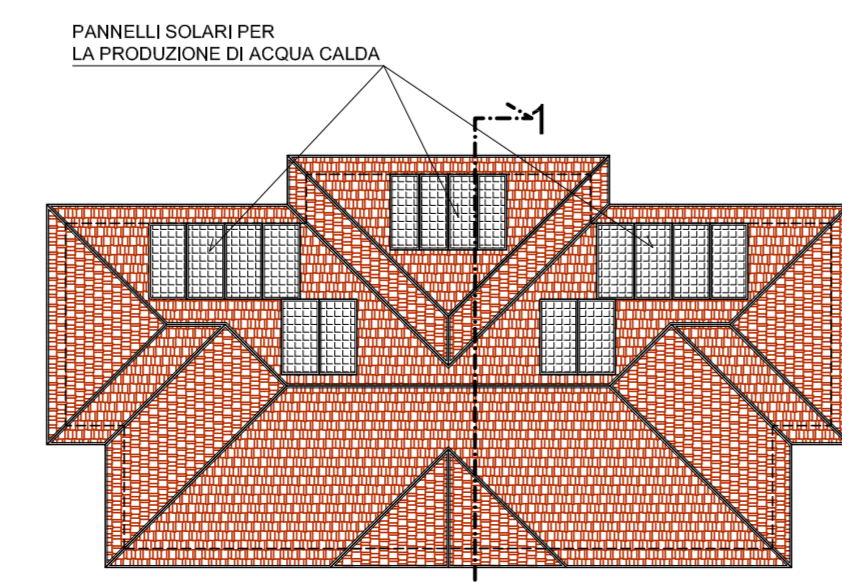
PIANO PRIMO - palazzina tipo A



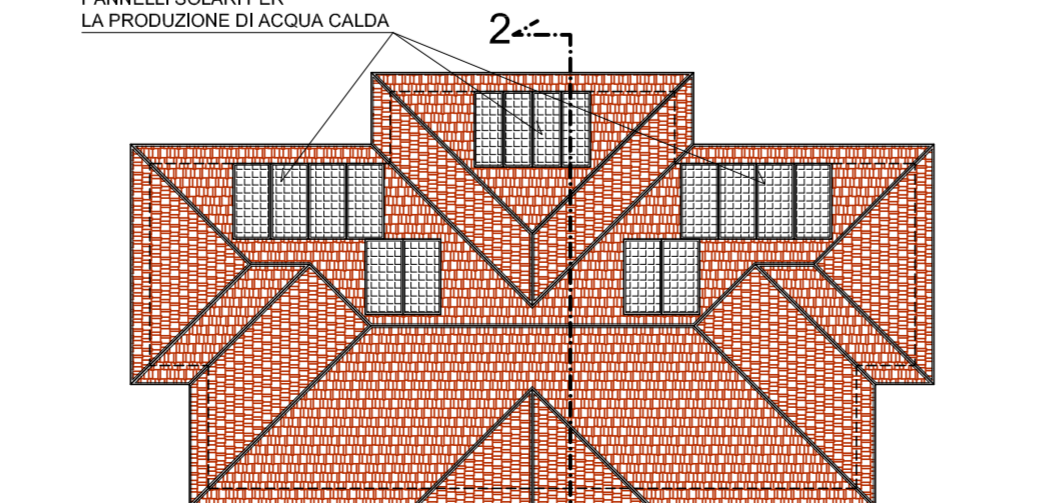
PIANO PRIMO - palazzina tipo B



PIANO SECONDO - palazzina tipo B

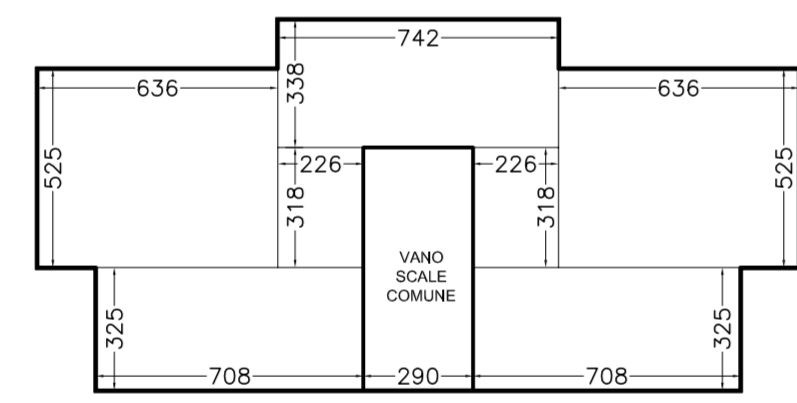


COPERTURA - palazzina tipo A



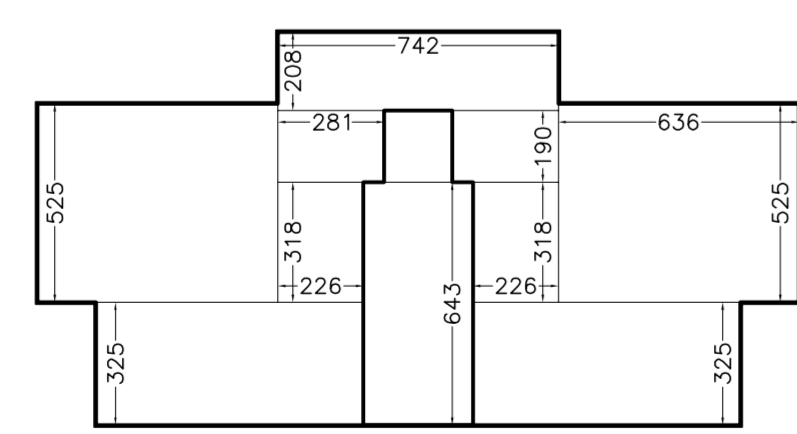
COPERTURA - palazzina tipo B

VERIFICA S.U.L. DI PROGETTO



palazzina tipo A

S.U.L. di progetto:
 $2 \times (5,25 \times 6,36) = \text{mq } 66,78 +$
 $2 \times (3,25 \times 7,08) = \text{mq } 46,02 +$
 $2 \times (2,26 \times 3,18) = \text{mq } 14,37 +$
 $(3,38 \times 7,42) = \text{mq } 25,08 =$
 $\text{mq } 152,25 \times n.2 \text{ piani} = \text{mq } 304,50$



palazzina tipo B

S.U.L. di progetto:
 $2 \times (5,25 \times 6,36) = \text{mq } 66,78 +$
 $2 \times (3,25 \times 7,08) = \text{mq } 46,02 +$
 $2 \times (2,26 \times 3,18) = \text{mq } 14,37 +$
 $2 \times (1,90 \times 2,81) = \text{mq } 10,68 +$
 $(2,08 \times 7,42) = \text{mq } 15,43 =$
 $\text{mq } 153,28 \times n.3 \text{ piani} = \text{mq } 459,84$

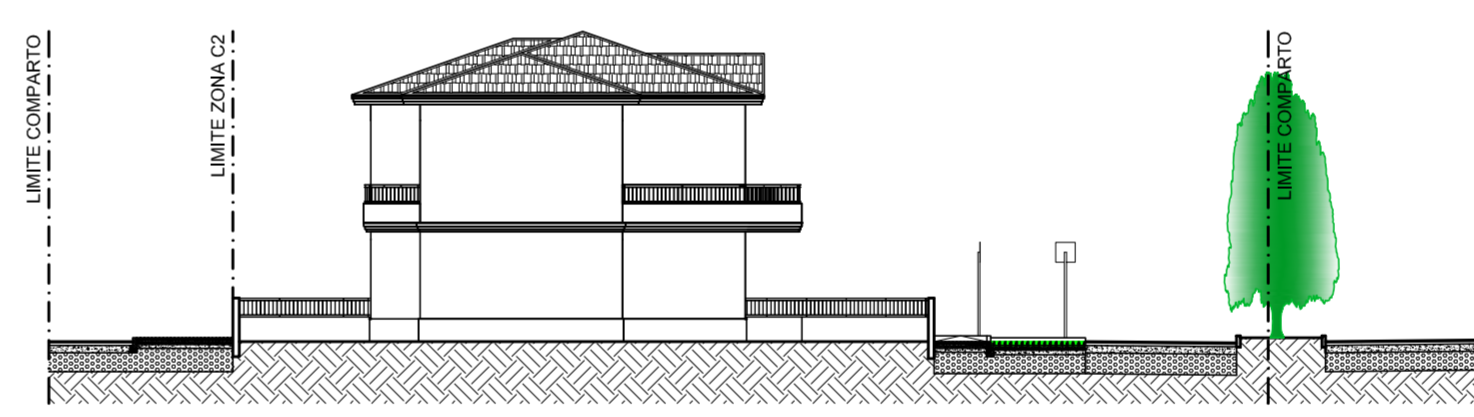
S.U.L. totale di progetto:
 PALAZZINA TIPO A = mq 304,50 x n. 2 fabbricati = mq 609,00
 PALAZZINA TIPO B = mq 459,84 x n. 2 fabbricati = mq 919,68
 S.U.L. TOT. = (609,00+919,68) = mq 1528,68 < mq 1532,40



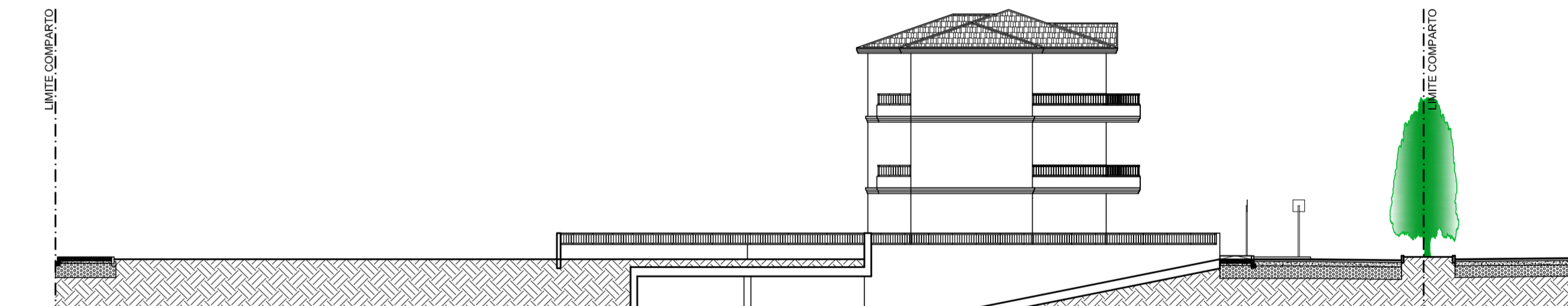
FRONTE



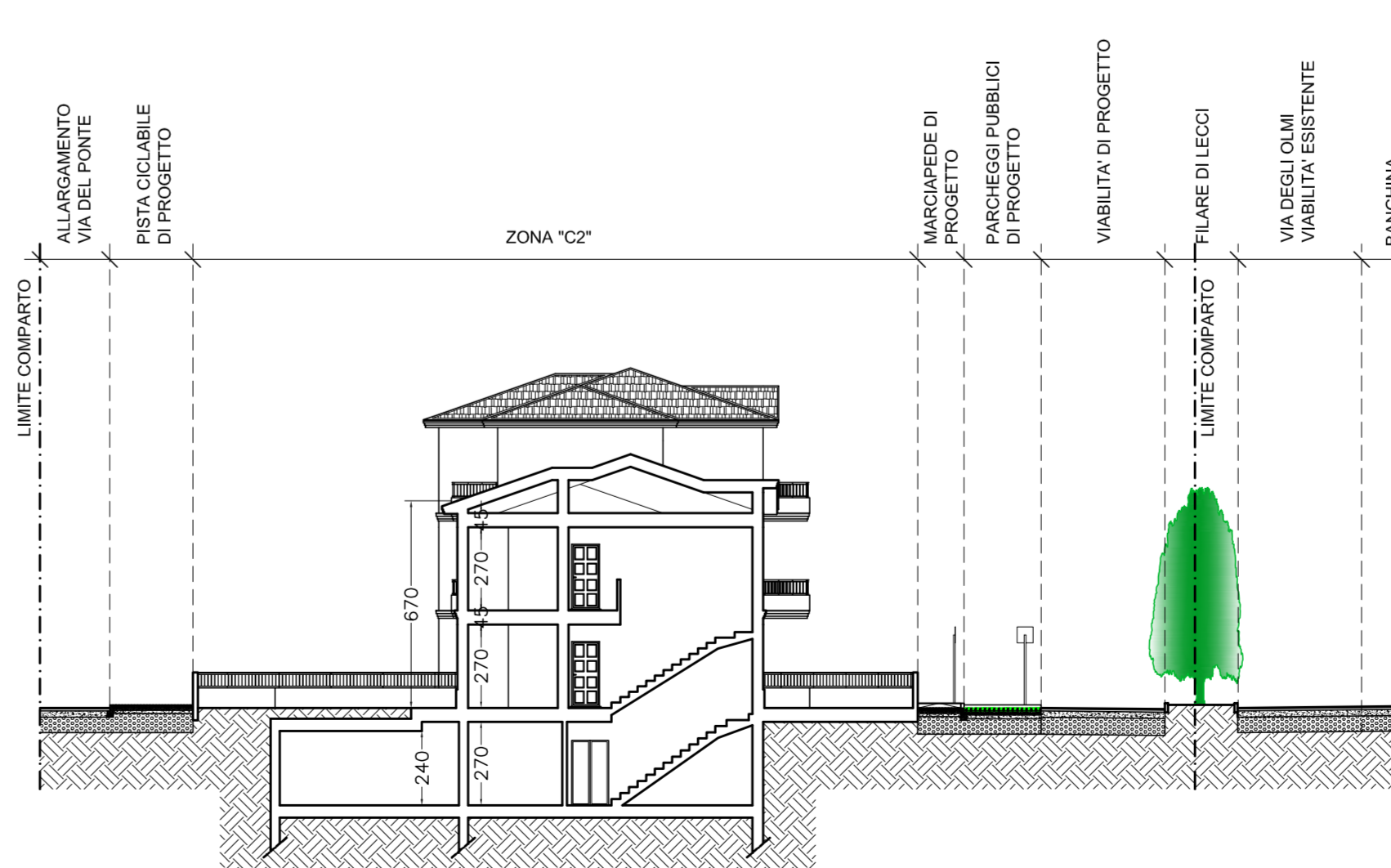
RETO



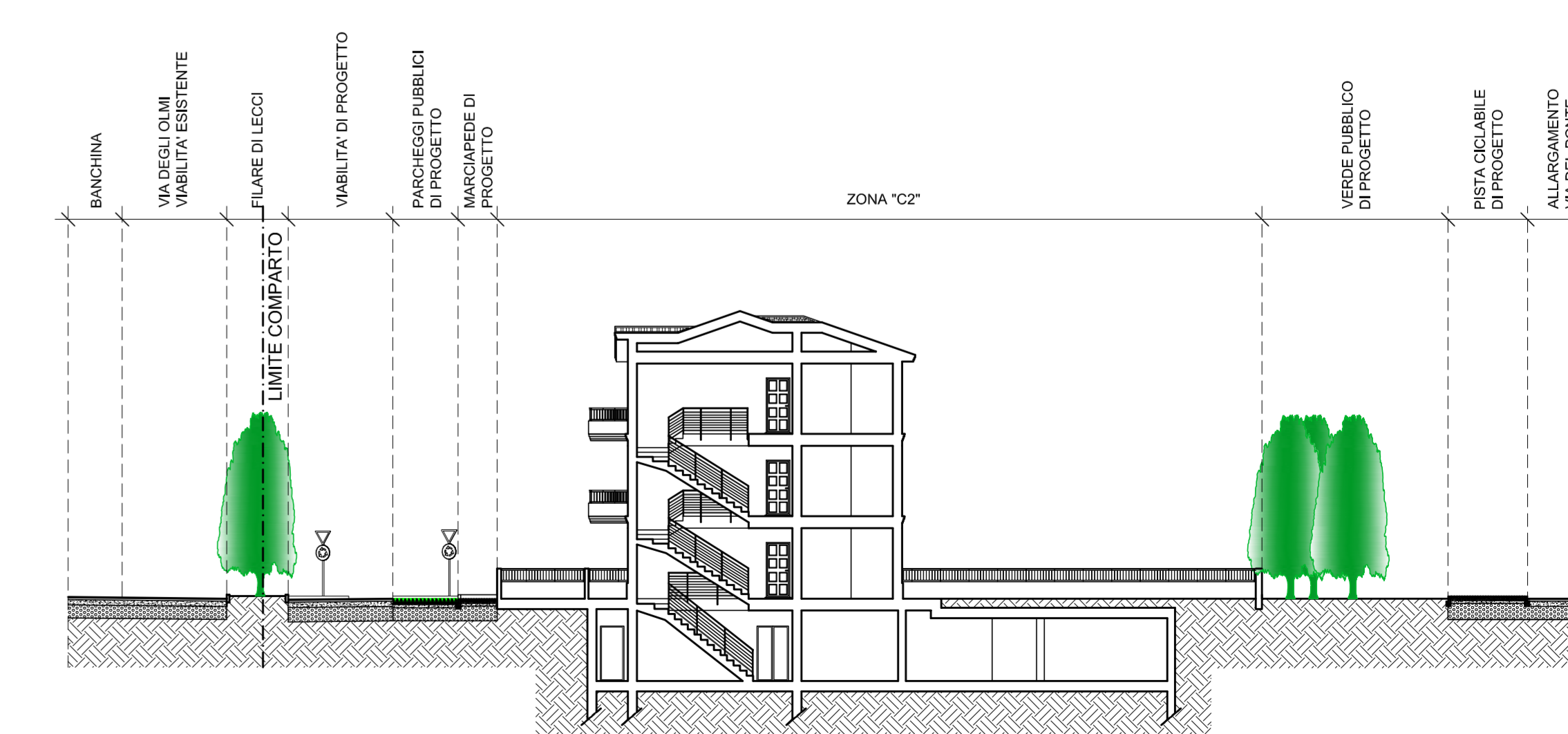
FIANCO SINISTRO FABBR. A



FIANCO SINISTRO FABBR. B



SEZIONE 1



SEZIONE 2